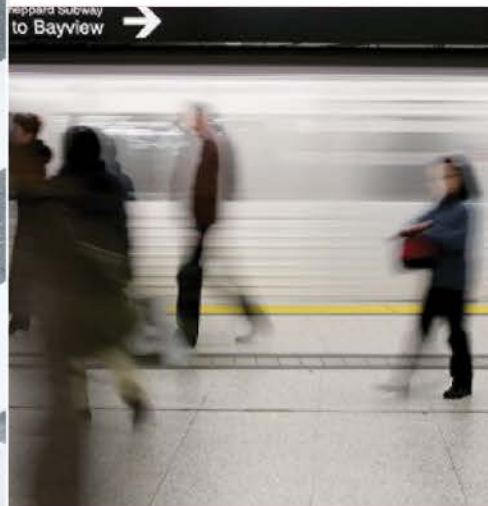




**BA Group**



# University of Toronto - Landscape of Landmark Quality Design

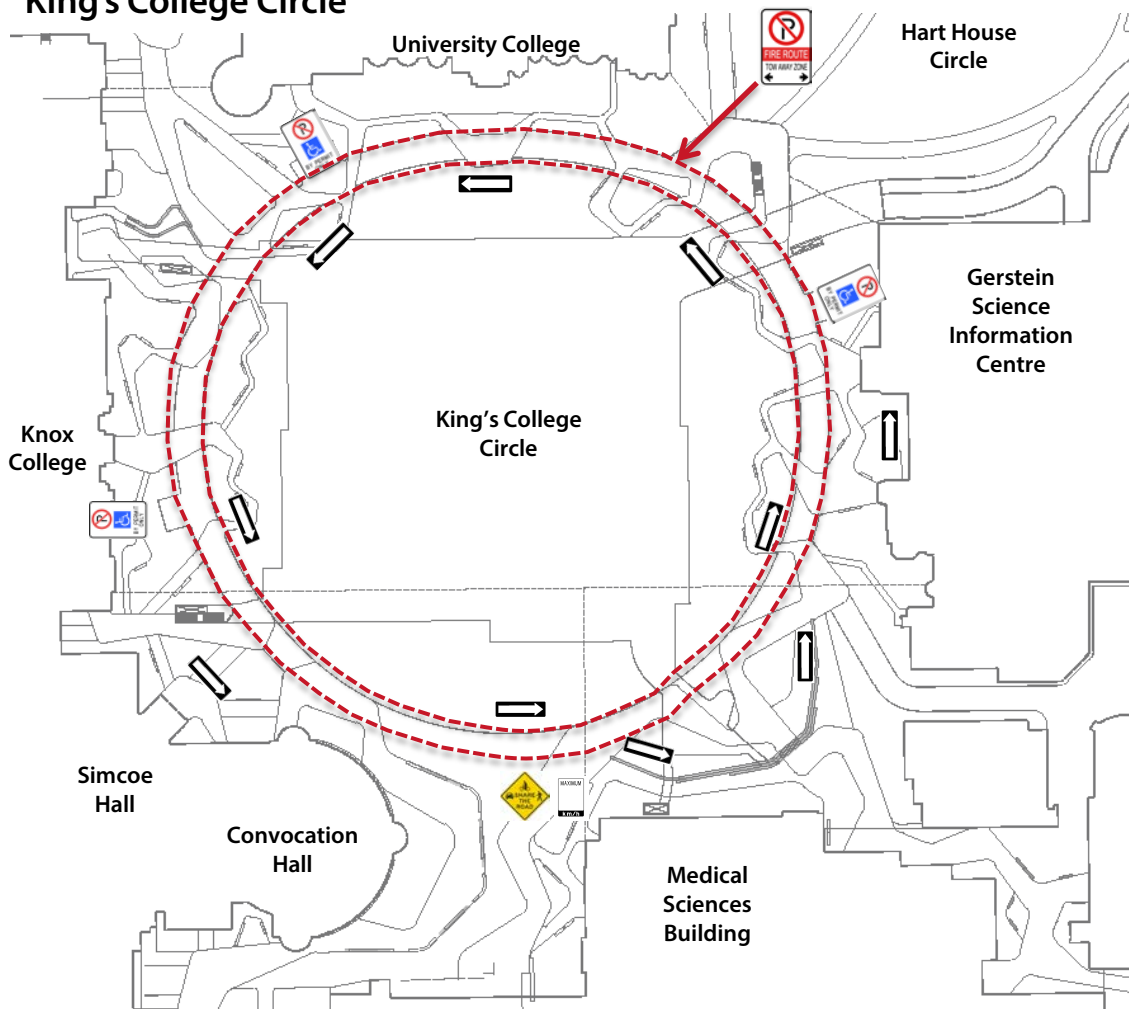
## Transportation Overview

September 16, 2016

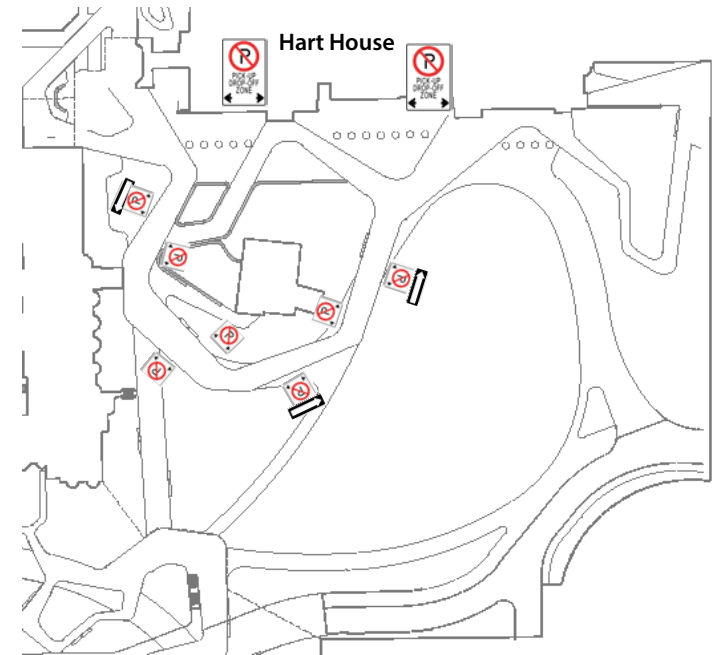
# Conceptual Vehicular Signage Plan



## King's College Circle

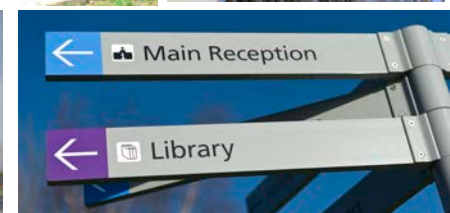
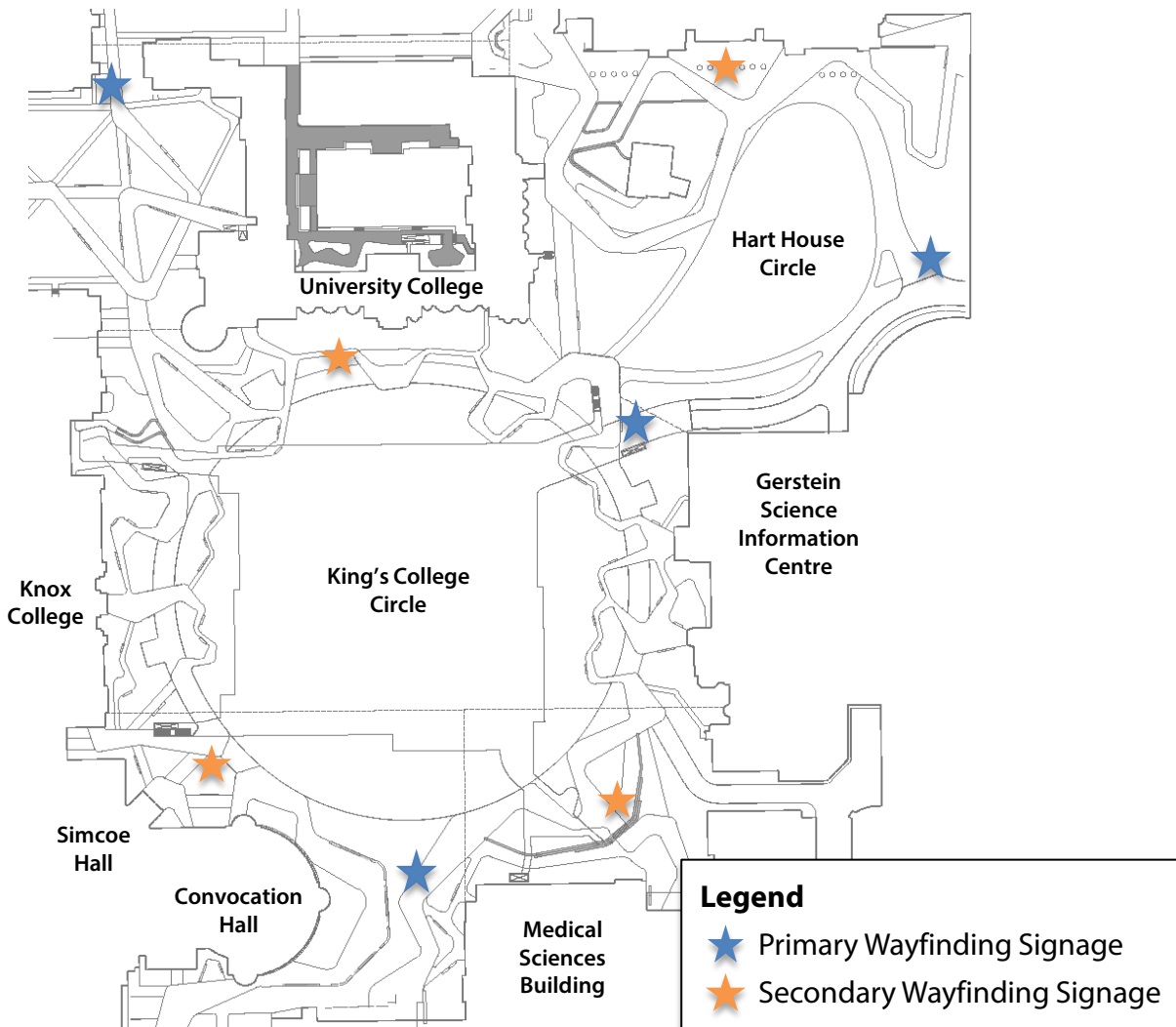


## Hart House Circle



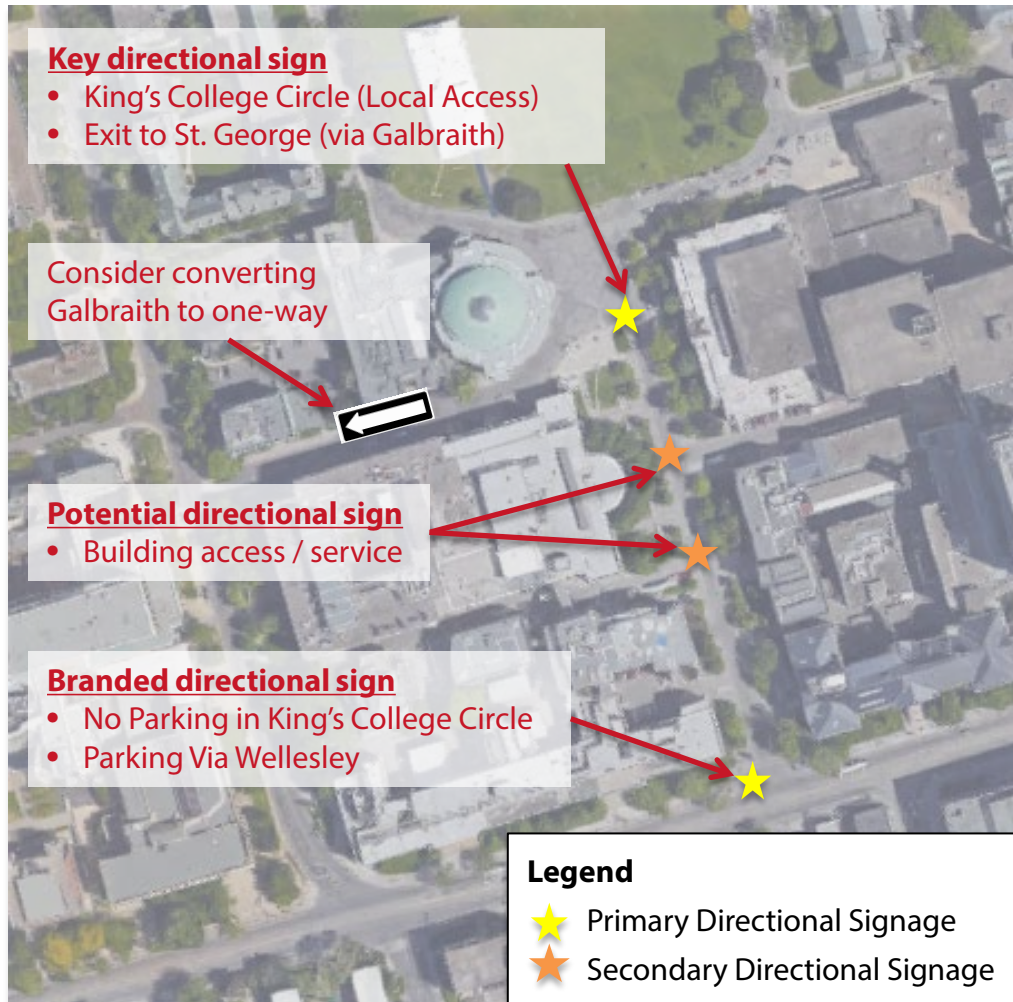
- Fire route signage will be located along the internal and external sides of the driveable portion of King's College Circle.
- Exact type and location of signage to be confirmed
- Signs can be stylized

# Conceptual Wayfinding Signage Plan

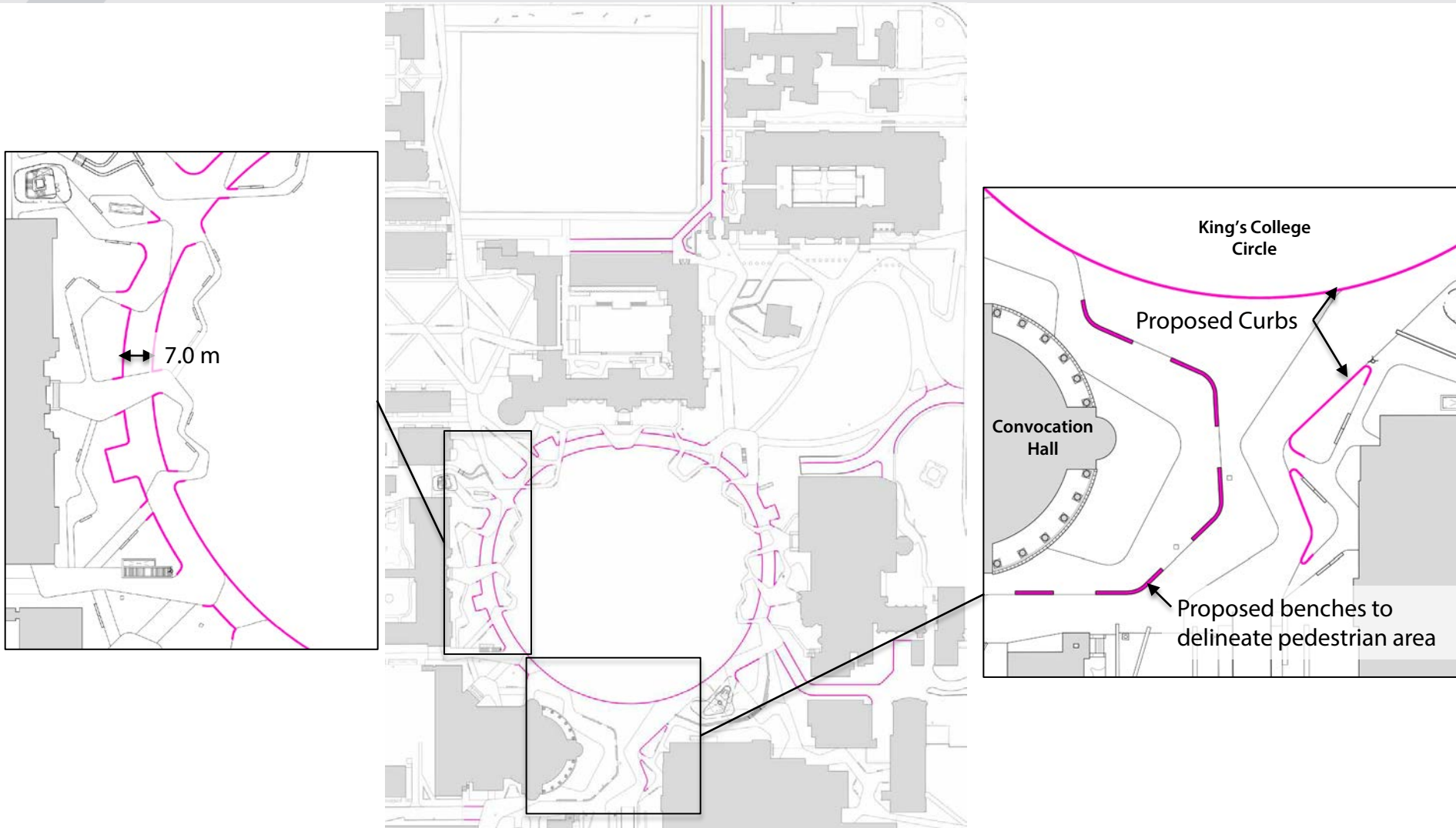




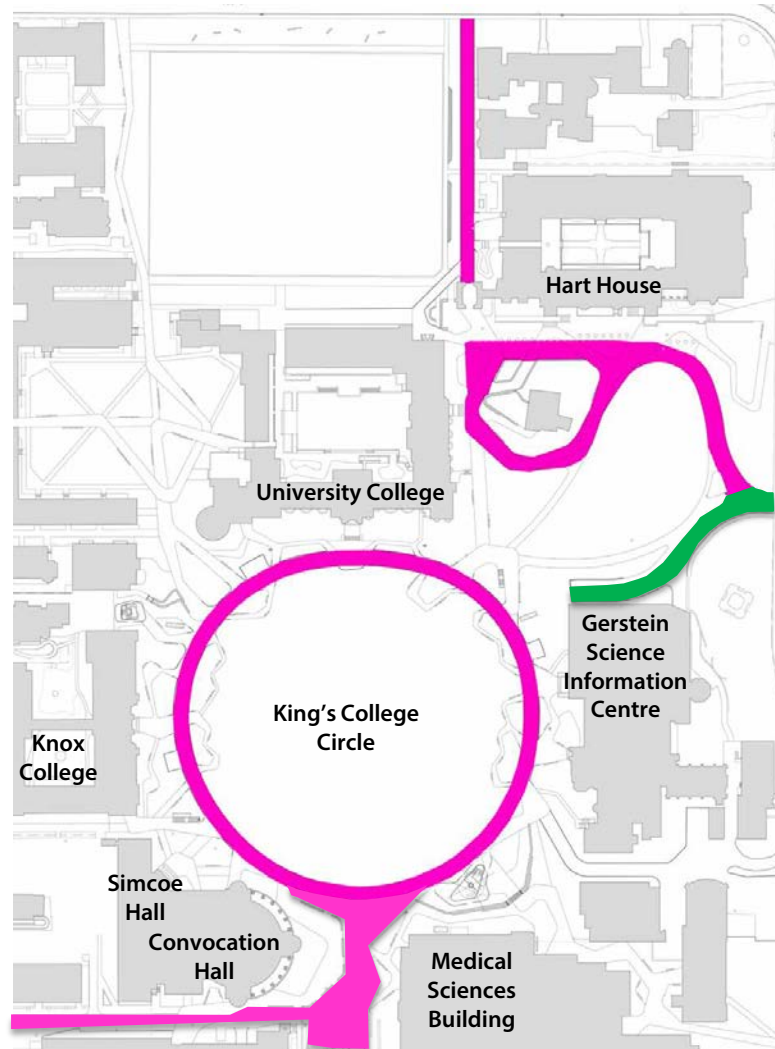
# Conceptual Wayfinding Signage Plan: Broader Campus Plan



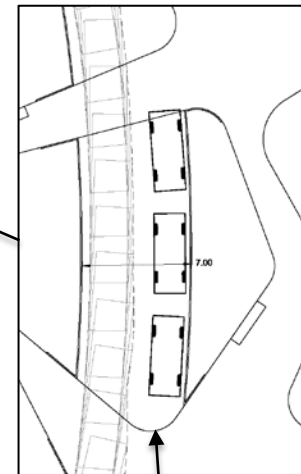
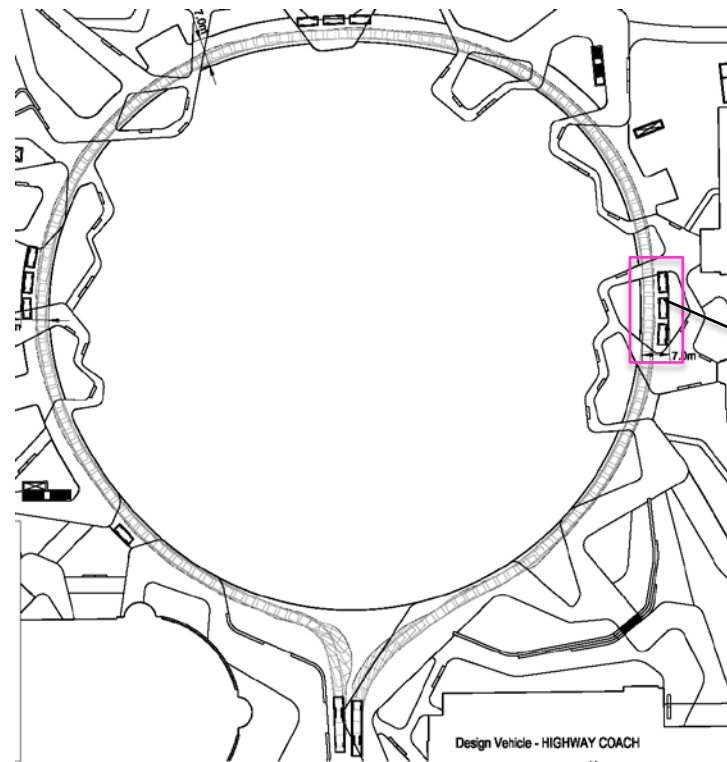
# Proposed Curb Locations



# Primary Circulation Access



## Vehicle Manoeuvring Diagram around KCC



Sufficient room for a Bus to pass a stopped passenger vehicle.

### Legend

- Primary Circulation Routes
- Strictly Vehicular Access

Design Vehicle - HIGHWAY COACH

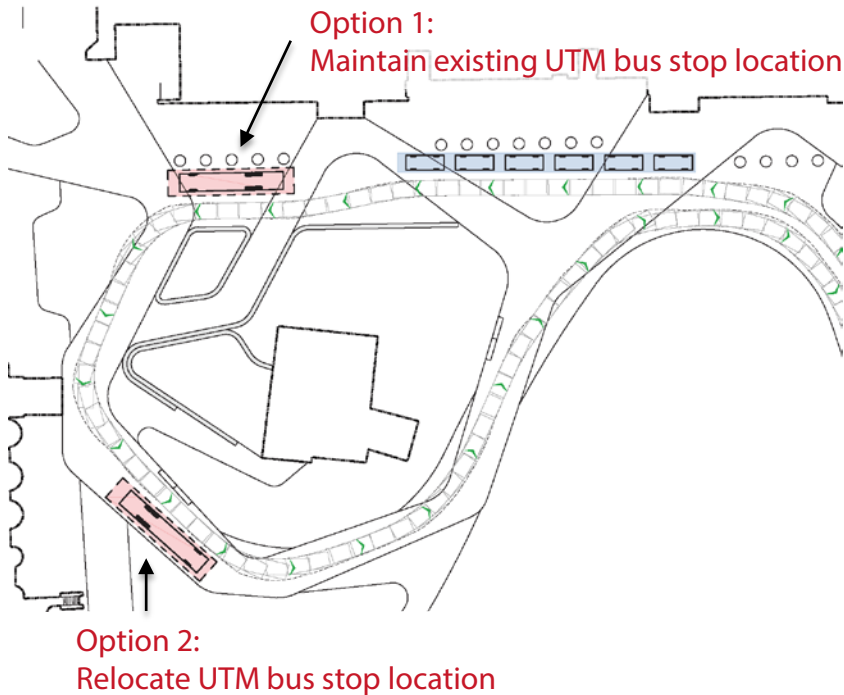
Overall Length	14.00m
Overall Width	2.40m
Overall Body Height	3.54m
Outside Turning Radius	15.01m
Inside Turning Radius	8.79m



# Hart House: Bus and Vehicular Pick-up / Drop-off



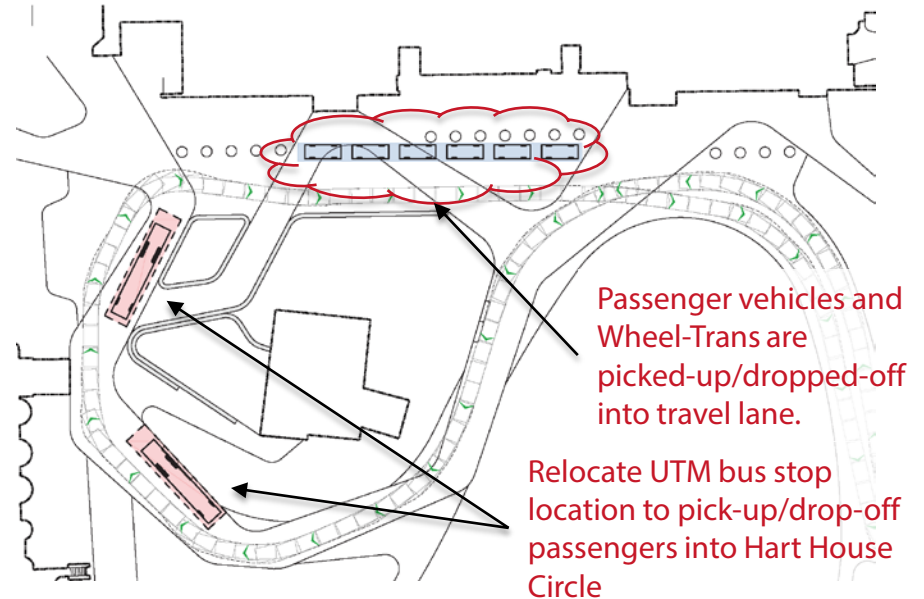
Hart House – Counter Clockwise Traffic Flow



## Key Considerations

- All traffic travels counter clockwise around Hart House Circle (consistent with current operations).
- Passengers are picked-up/dropped-off onto sidewalk.

Hart House – Clockwise Traffic Flow



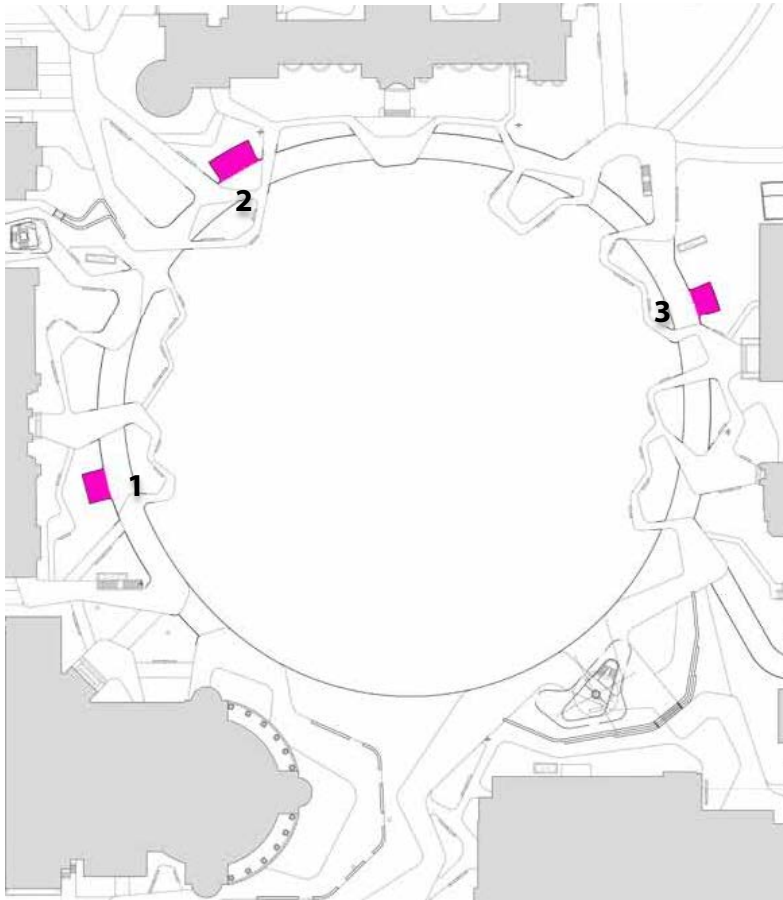
## Key Considerations

- Change traffic flow to travel clockwise around Hart House Circle
- Enables UTM bus to pick-up/drop-off passengers into Hart House Circle
- Passenger vehicles and Wheel-Trans are picked-up/dropped-off into travel lane.

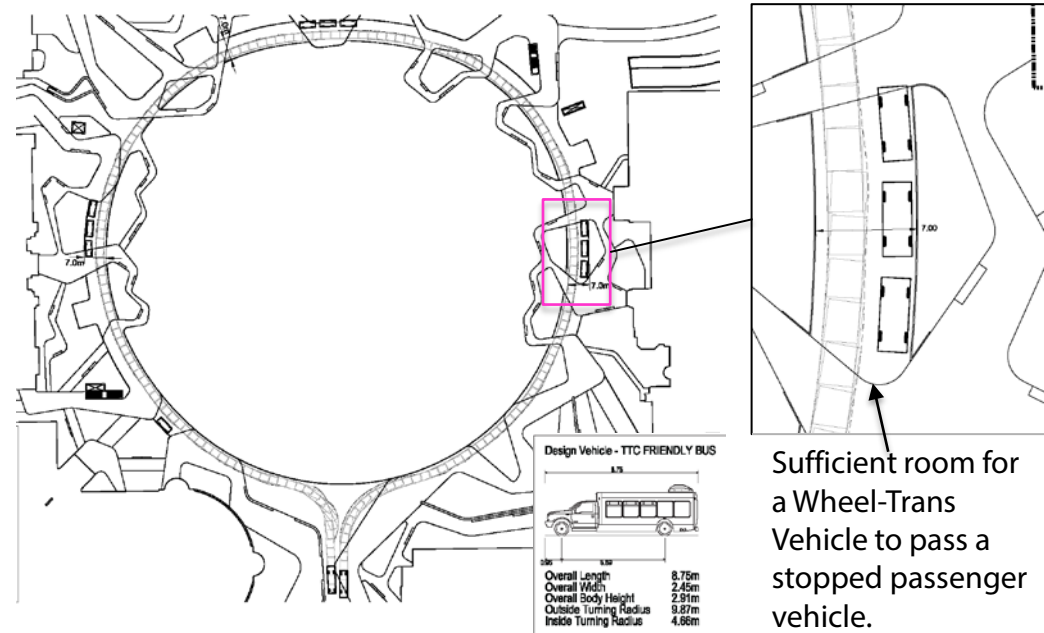
# King's College Circle: Accessible Parking / Pick-up & Drop-off



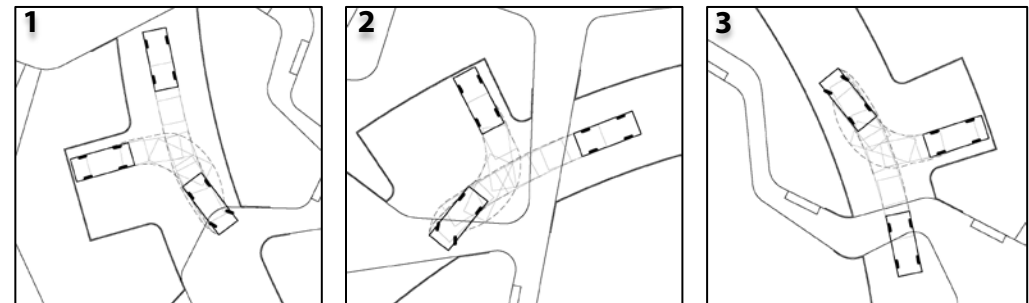
## Accessible Parking Spaces



## Vehicle Manoeuvring Diagram for Wheel-Trans Vehicle

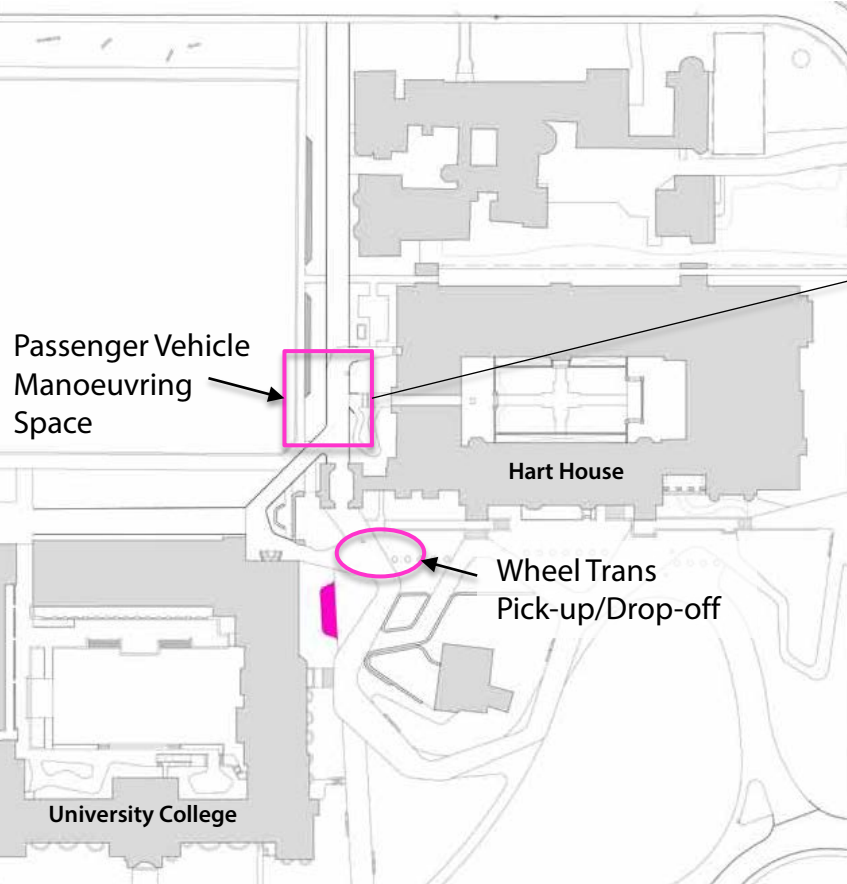


## Vehicle Manoeuvring Diagrams for Accessible Parking Spaces

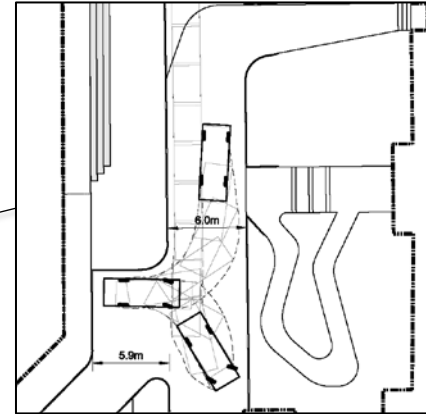




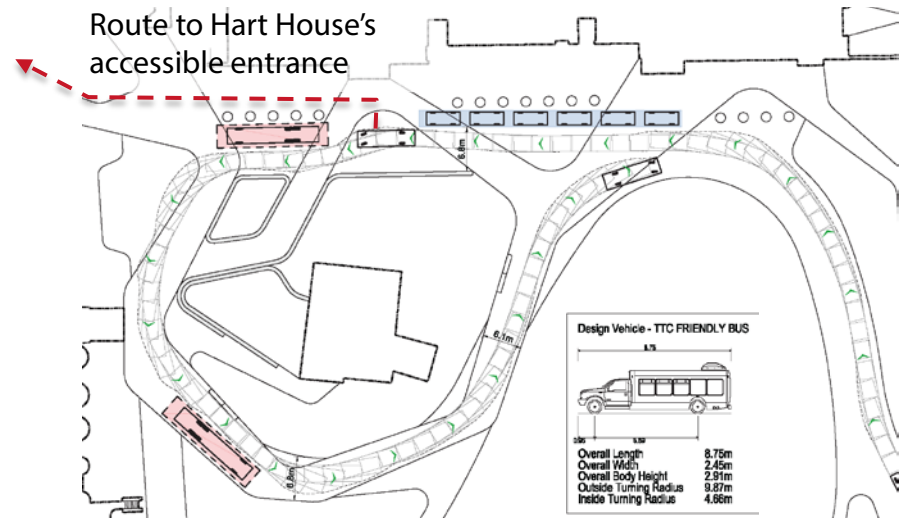
# Hart House / Tower Road: Accessible Parking / Pick-up & Drop-off



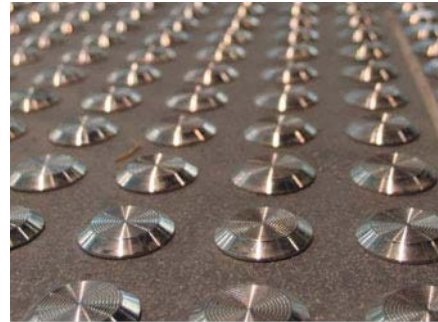
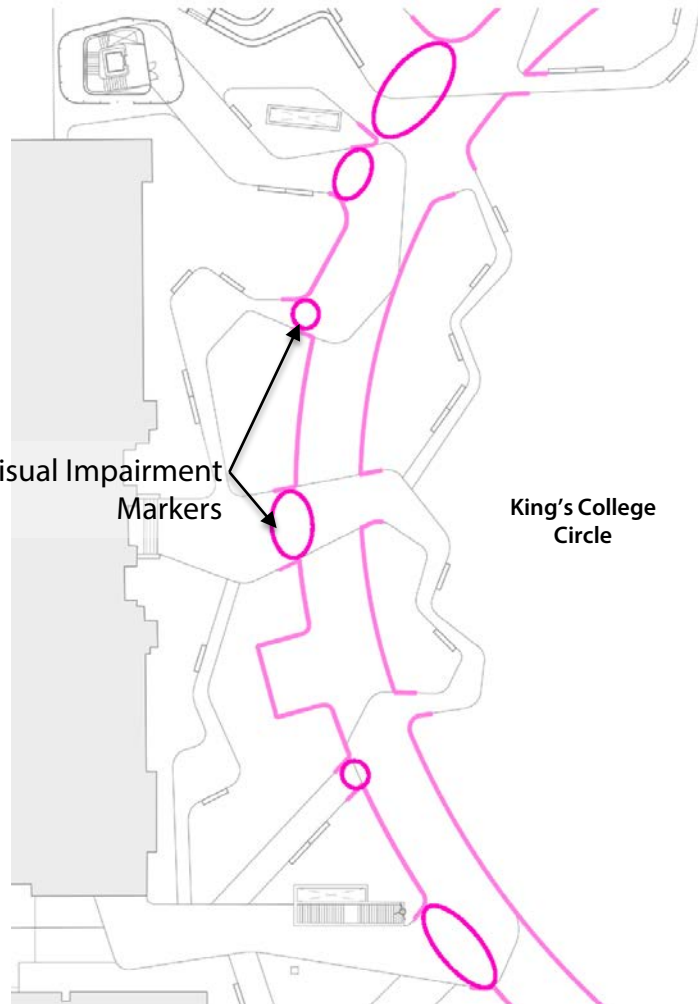
Vehicle Manoeuvring Diagram for Passenger Vehicle



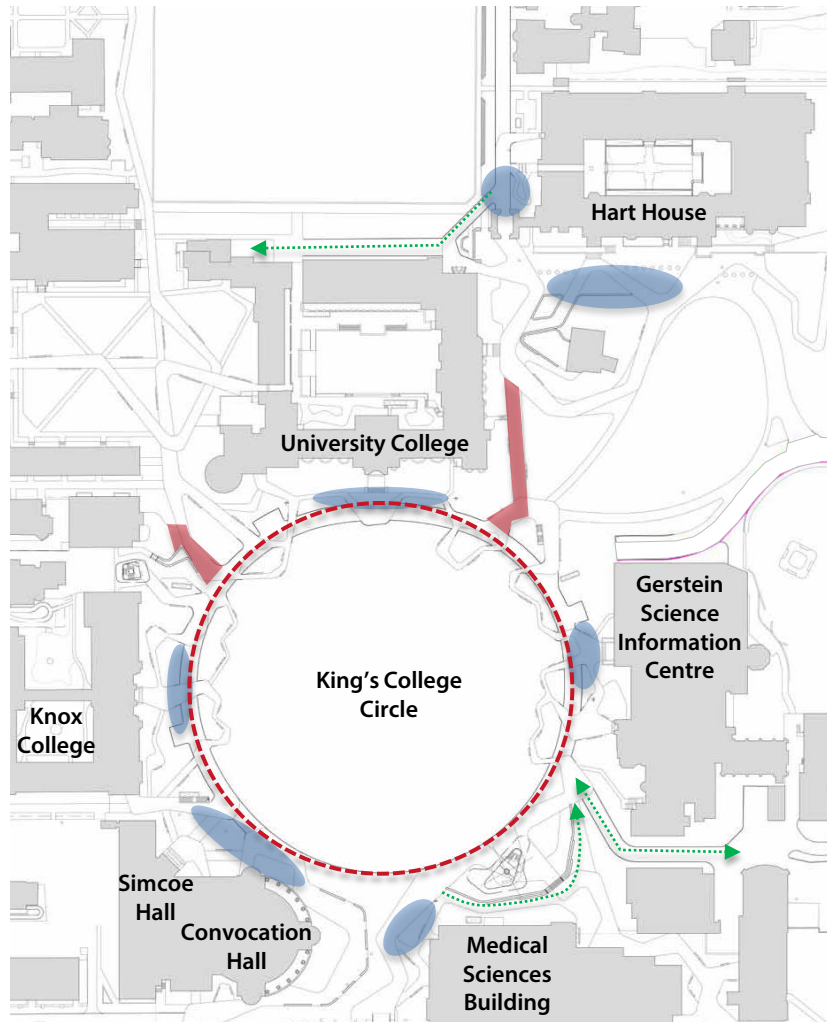
Vehicle Manoeuvring Diagram for Wheel-Trans Vehicle



# Visual Impairment Markers



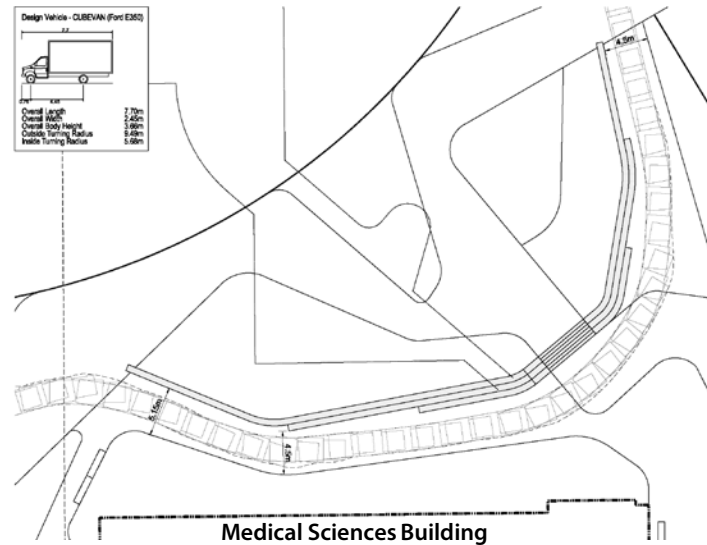
# Service Zones



## Vehicle Manoeuvring Diagram around Medical Sciences Building

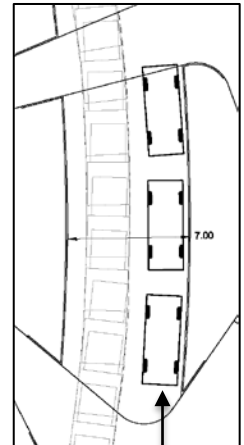
Design Vehicle - CUBEVAN (Ford E350)

Overall Length	7.70m
Overall Width	2.40m
Overall Body Height	3.60m
Outside Turning Radius	8.60m
Inside Turning Radius	5.60m



### Legend

- On-Street Layby Zones
- Fire Route
- - - Loading Area



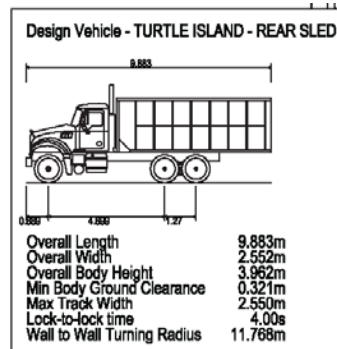
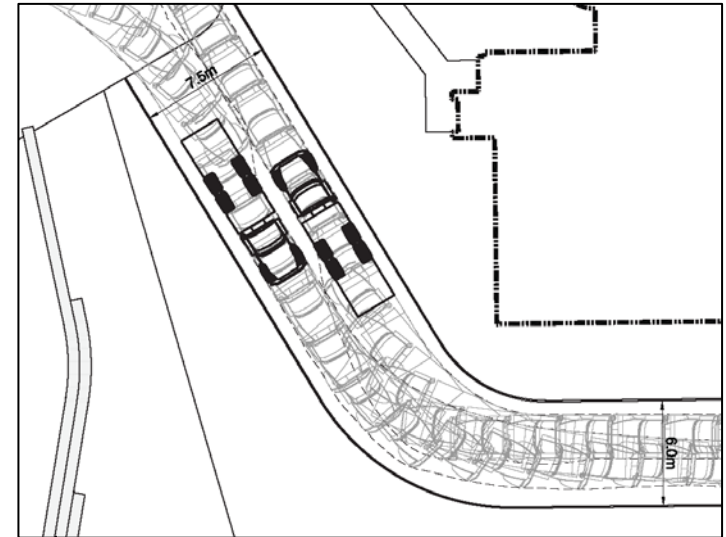
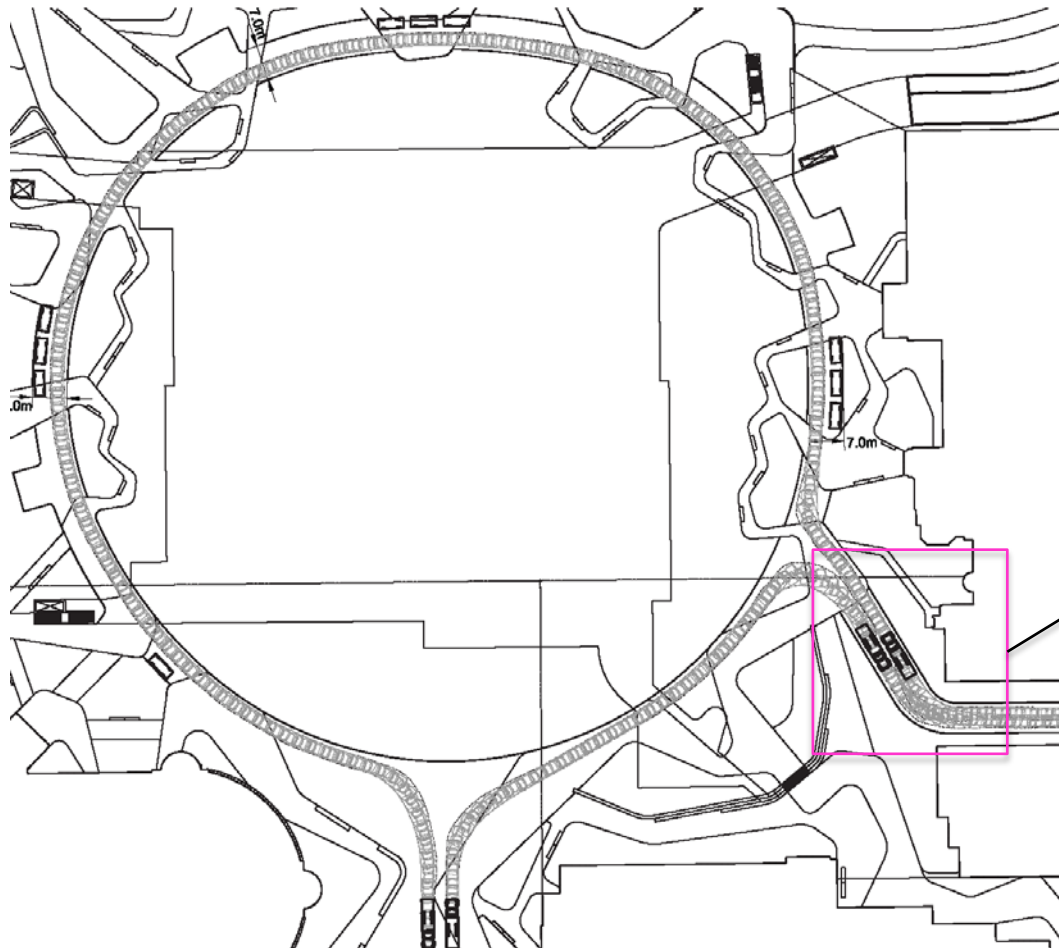
Sufficient room for a Cube Van to pass a stopped passenger vehicle on KCC.



# Service Zones: Anatomy Lane



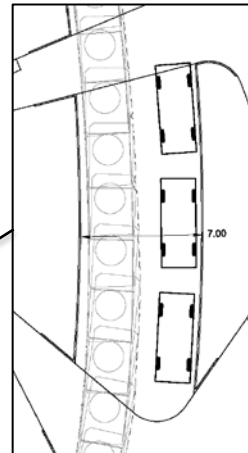
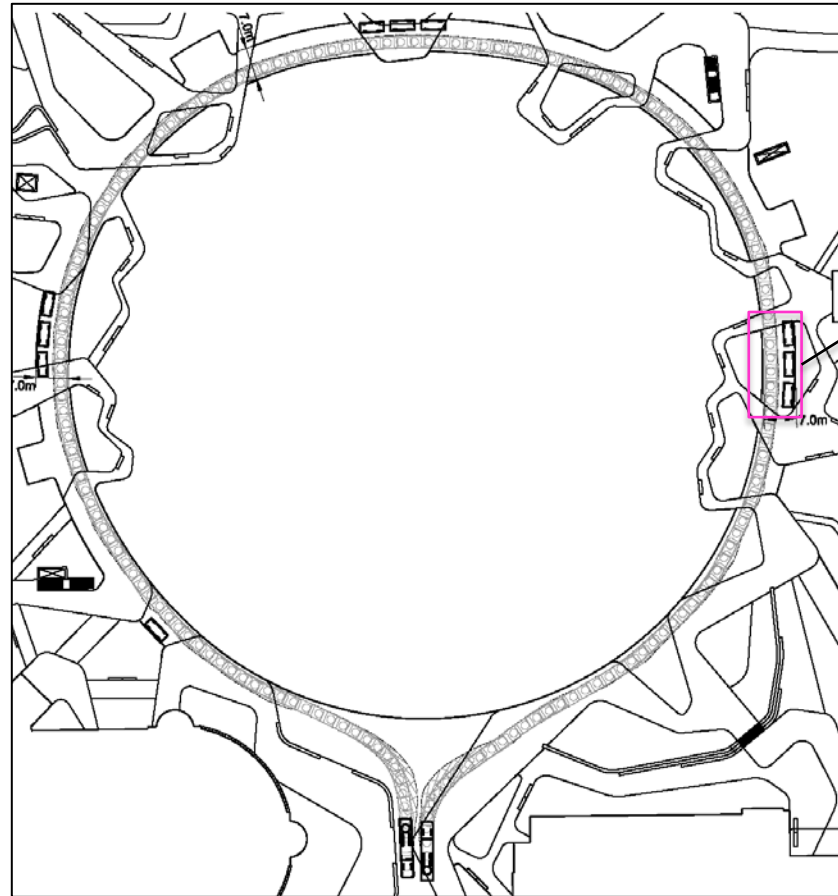
Vehicle Manoeuvring Diagram for Anatomy Lane



# Fire Routes



## King's College Circle Fire Route



Sufficient room for a fire truck to pass a stopped passenger vehicle.

## Hart House Fire Route

